

A scenic view of a residential community. In the foreground, there are pine trees on the left and red-leafed bushes at the bottom. A pond with a fountain and a gazebo is in the middle ground. In the background, there are green trees and blue mountains under a cloudy sky.

**ASBURY PLACE**  
**MARYVILLE**  
*Colorful Living*



## Life is colorful here!

Experience how vibrant life can be when doing what you're passionate about takes the place of responsibilities you'd rather not tend to.

Here, well-being comes as naturally as new friendships and new experiences.

Walk Smoky Mountain trails and enjoy gorgeous mountain views from your own sunporch or patio. Dine with new friends. Volunteer. Strengthen and tone in the Wellness Center. Your life here can be full of rewarding experiences and opportunities of your own design.

And when friends and family come to visit, they'll ask: Can they hike the Great Smoky Mountains? Is there great food, wineries, and culture to explore nearby? Are Asheville and the Biltmore Estate really just a day-trip away? Yes! you tell them.

Experience the beauty and color of life in the foothills of Tennessee at Asbury Place Maryville.



## Make yourself at home.

Make choices. That's what it means to be independent.

And that's why we give you so many choices.

Dining, for example. Sometimes you'd rather head to one of Maryville's unique restaurants with friends. Other times, you'd prefer entertaining at home. A sunny afternoon is right for a picnic or lunch at The Bistro. Dining at Asbury Place is as flexible as you are, and the choices are always yours.

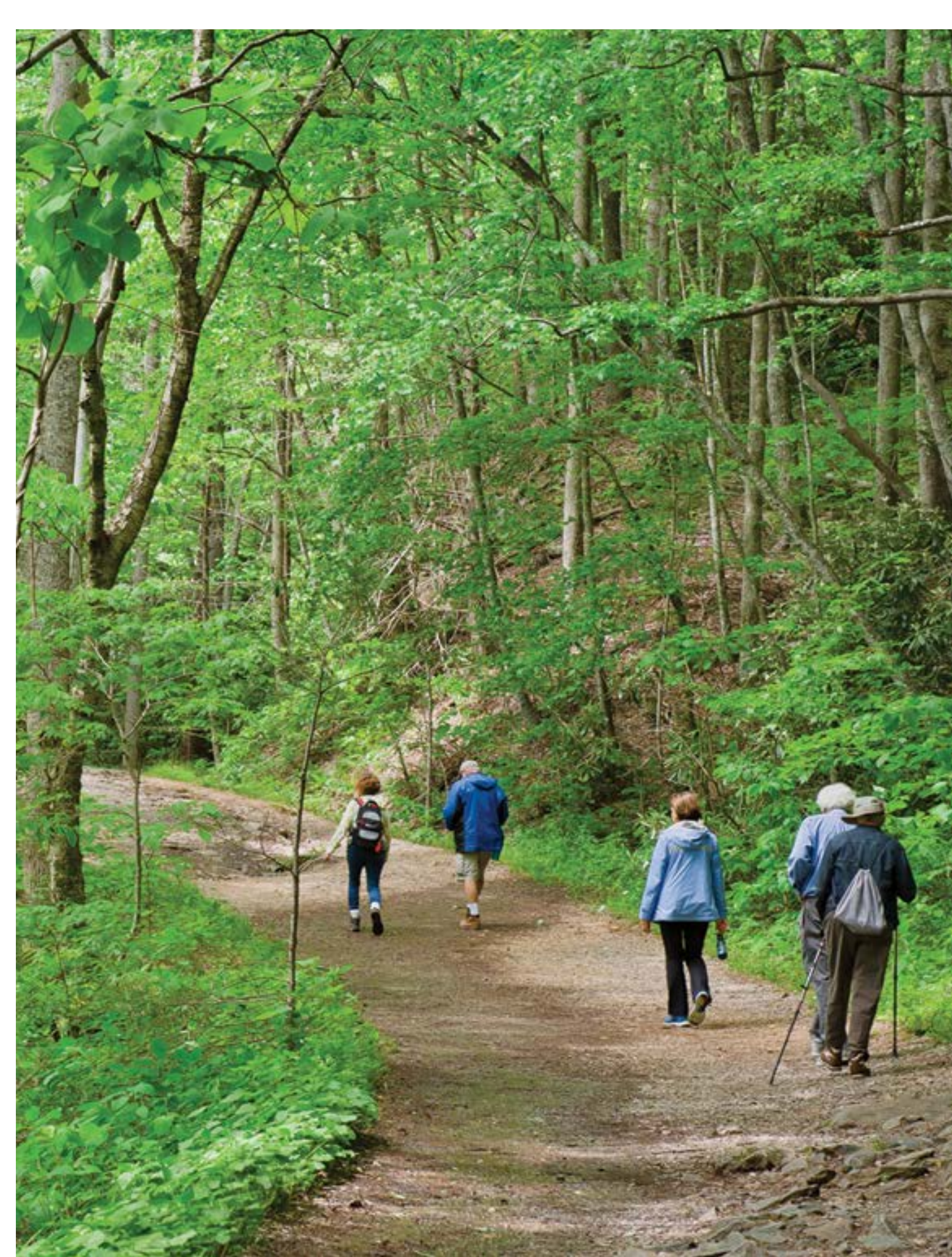
And residential living? Again, your choice. Apartment, cottage or townhome? Enjoy bright, open floor plans and high-end finishings. Settle into a cottage with a cozy porch and patio for visiting with friends.

Maintenance is provided, of course. Because we know you'd rather spend your time choosing from enriching, entertaining activities – many created by the residents who bring fascinating experiences and backgrounds to Asbury Place and help make the community their own.

So go on. Make yourself at home.







## Content and confident, you're leaving ordinary life behind.

Less than 30 minutes from the Great Smoky Mountains National Park, Asbury Place Maryville offers panoramic views and an unusually beautiful location that opens an exceptional range of possibilities for retirement living. Designed to provide you a lifetime of living well, you have access for future health care needs right here on our campus:

- Assisted living
- Memory care
- Skilled nursing
- Short-term rehabilitation
- Home care services

It's a location offering an independent, active lifestyle and the pure contentment that comes from knowing you have a plan in place for the future. And that sets Asbury Place Maryville apart from 55+ and other senior living options.





## Life gets simpler — and much more rewarding.

Without home maintenance headaches, you now have the time to do what you want to do, not what you have to do. Find the pace that suits you and experience the expansion of opportunities and friendships that come with community living.

Head out to hike the Smoky Mountains, keep your green thumb going with the gardening club or invite your friends for a happy hour in the Garden Room. Spring and fall at Asbury Place are not to be missed! And our mild winters make this a delightful location year-round.

Gracious and welcoming are not just words here, they're a way of life. Join new friends for walks around the Lake St. Clair, take part in resident-organized pot-lucks, and uncover new volunteer opportunities. In short, enjoy the active, purposeful lifestyle that comes from a community of engaged, like-minded people.

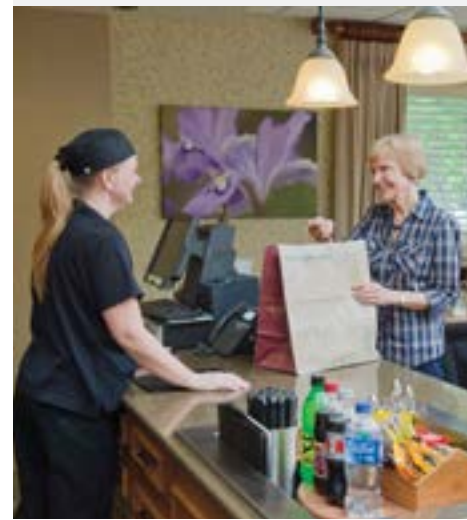
## A Life Well Lived

Asbury Place Maryville is designed with aging well in mind. Well-being informs everything we do – from classes focusing on flexibility, balance, and strength; social events and volunteer opportunities; to unique resident clubs and nearby opportunities for continuing education.

Studies continue to show the significant health benefits that come from staying social and active. Our cognitive, emotional, and physical health benefit when we have more opportunities to flex those 'muscles.'

Planning for friendship and support as you age reduces stress and creates a healthier mind and body. Access to on-site health services if needed is key to that peace of mind.

Learn more at [MaryvilleSeniorLiving.com](http://MaryvilleSeniorLiving.com)







Glossary | Become familiar with the terminology of senior living.

## A Legacy of Service

Founded by members of the Holston Conference as Asbury Acres Home for the Aged in 1956, Asbury Place is proud of its faith heritage and values, and has intentionally evolved to be a community that welcomes people of all backgrounds, beliefs, cultures, and abilities. We honor our spiritual heritage by fostering a spirit to do all the good we can.

At Asbury Place, the strength and spirit of our Appalachian heritage is mirrored in the pride our campus leadership, associates, and residents take in building a community spirit where we count on one another to do our best each and every day.

**Call 865-238-8318 or visit [MaryvilleSeniorLiving.com](http://MaryvilleSeniorLiving.com) for more information.**

**Assisted Living.** A special combination of housing, personalized supportive services and health care designed to meet the needs – both scheduled and unscheduled – of those who need help with daily living activities.

**Continuum of Care.** A reference to the health care and home care services available that support and supplement independent residents as they age or face health challenges.

**Entrance Fee.** The single, upfront payment that provides for residency in a CCRC and provides for ongoing campus maintenance and enhancements.

**Independent Living.** Residents live independently in an apartment or Villa with maintenance services provided by Asbury Place.

**MSF or Monthly Service Fee.** Determined by the size of the residence, this fee covers common costs associated with residency, including campus amenities, maintenance, utilities and emergency response.

**Second-Person Fee.** With fee structures built around single occupancy of a residence, two residents can expect a second-person fee to cover the additional costs associated with living here.

**Services & Amenities.** Lists of what the community provides that enhance the community living experience.

**Skilled Nursing.** 24-hour care for residents with acute needs. Residents usually rely on assistance for most or all daily living activities. Regular medical supervision.



## Services & Amenities Included in Monthly Fee

- Home maintenance
- Lawn care
- Property taxes
- Clubhouse, Bistro and Wellness Center
- A range of wellness activities and programs
- Walking trails
- St. Clair Lake Pavilion with grill
- Transportation services available
- Cleaning services
- Pendant system with emergency response
- Apartments include utilities and basic cable TV
- Townhomes and Cottages include water and trash pick-up. Utilities and phone not included.

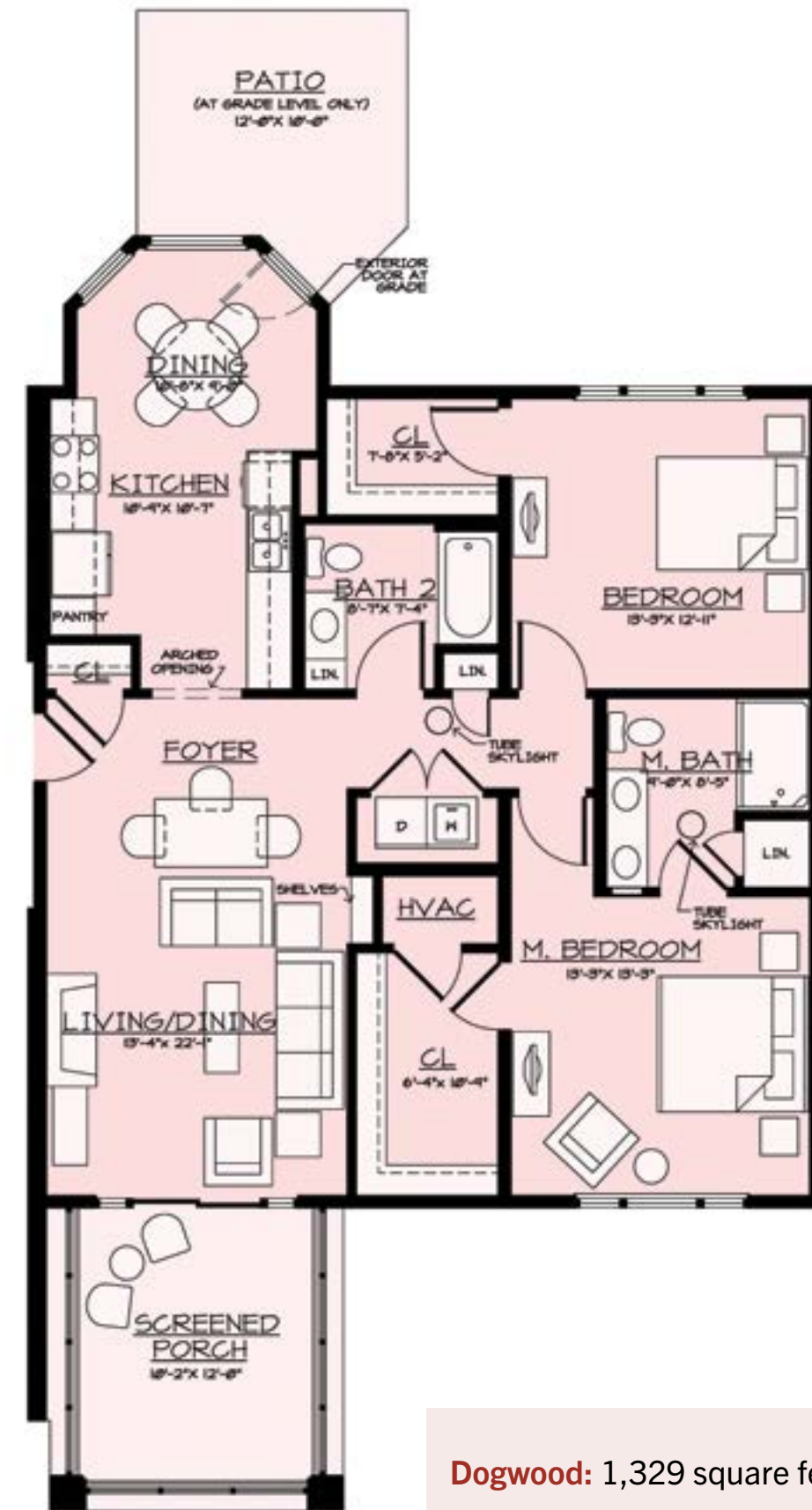
## Entrance Fee Plans

Why charge an entrance fee? Even though your residence here is maintenance-free, the community is not. Entrance fees help provide capital funds for upkeep, enhancements, and the wide range of services, programs, and staff that a well-run community requires.

**50% Refundable Plan:** With this plan, you receive half your entrance fee, payable to you or to your estate, at the time you are no longer a resident at Asbury Place and have satisfied the terms of the Residency Agreement.\*

**80% Refundable Plan:** With this plan, you receive 80 percent of your entrance fee, payable to you or to your estate, at the time you are no longer a resident at Asbury Place and have satisfied the terms of the Residency Agreement.\*

\*Typically the refund is paid once your residence has been re-occupied by a new resident who has paid an entrance fee. Please read the Residency Agreement carefully for details.



**Dogwood:** 1,329 square feet

*Dogwood Apartment*

FLOOR PLANS

FLOOR PLANS

Maple: 1,569 square feet



GENERAL NOTES:  
 •10' CEILINGS HAVE REPLACED TRAY CEILINGS ON TOP FLOOR.  
 •TUBE SKYLIGHTS ARE IN TOP FLOOR APTS. ONLY.

Maple Apartment

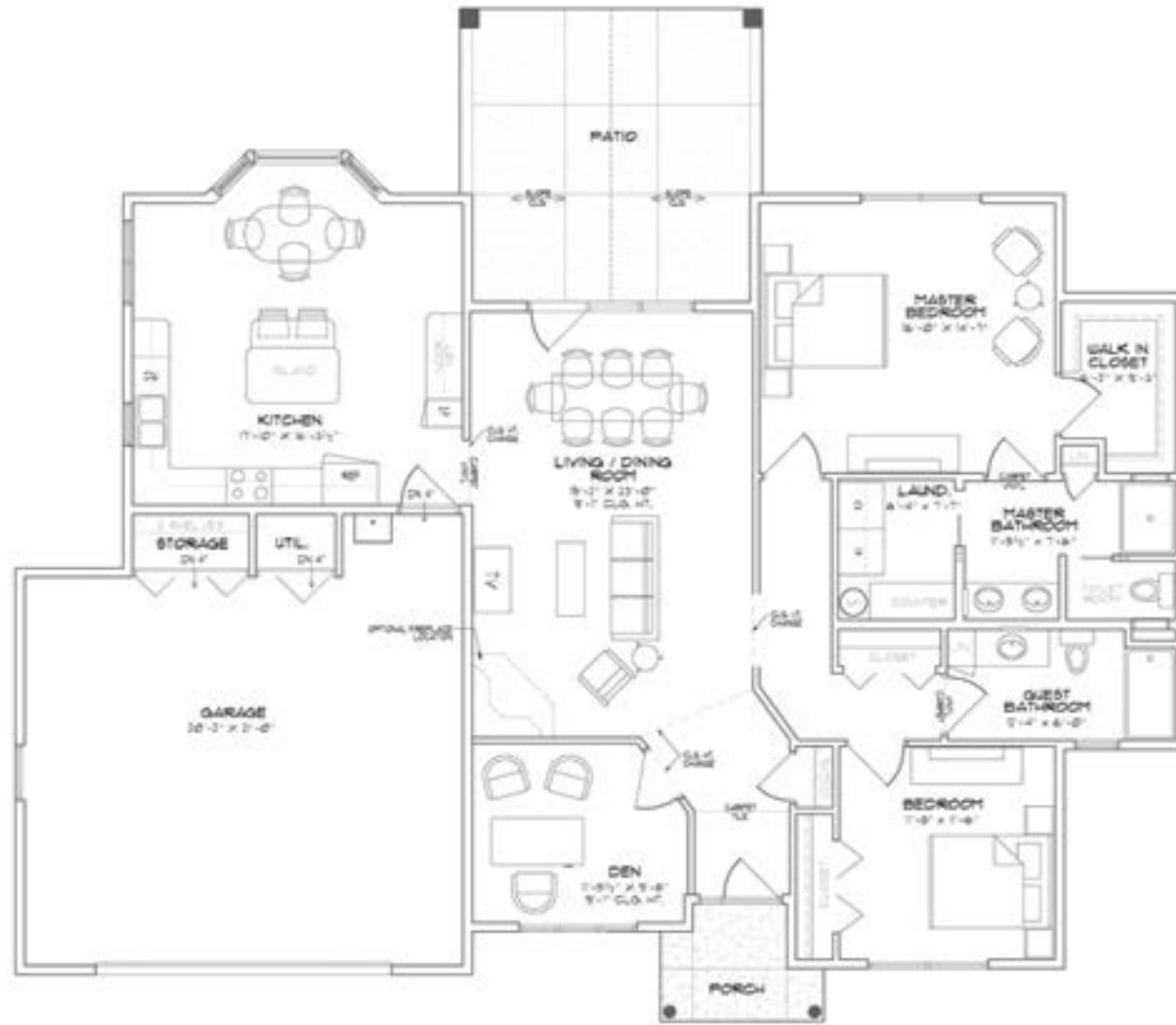


Holly: 960 square feet

Holly Apartment

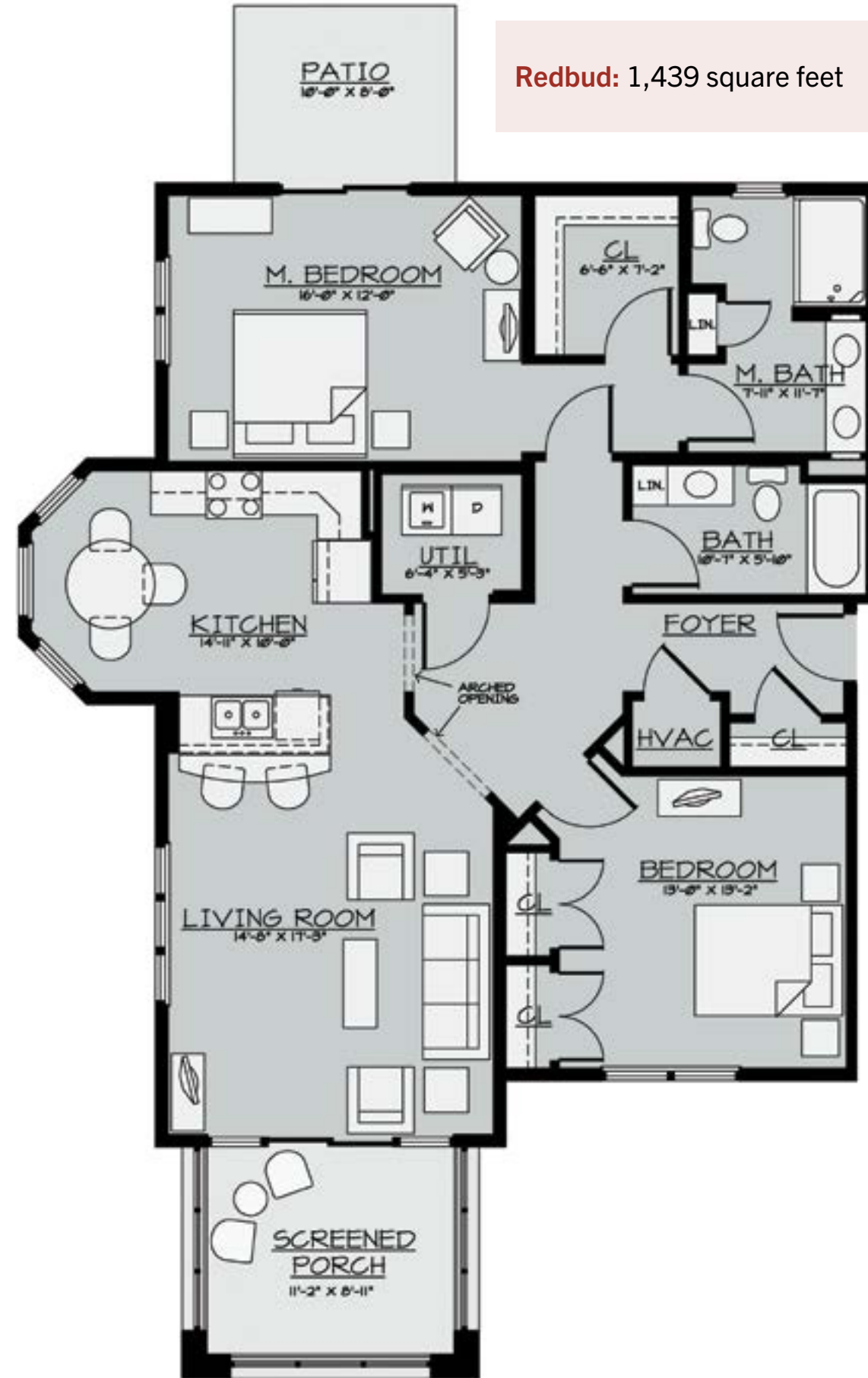


FLOOR PLANS



Hickory: 1,620 square feet

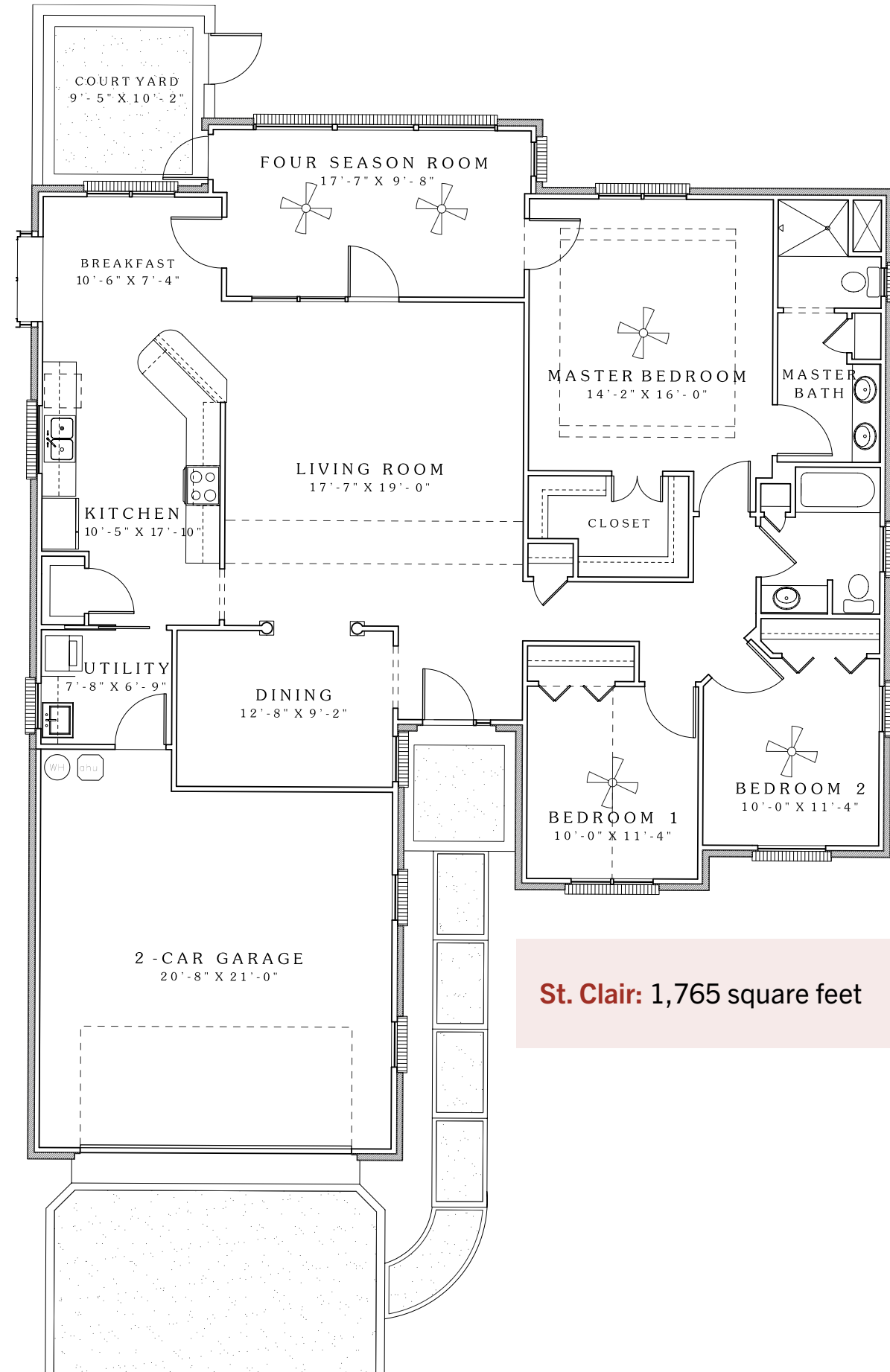
FLOOR PLANS



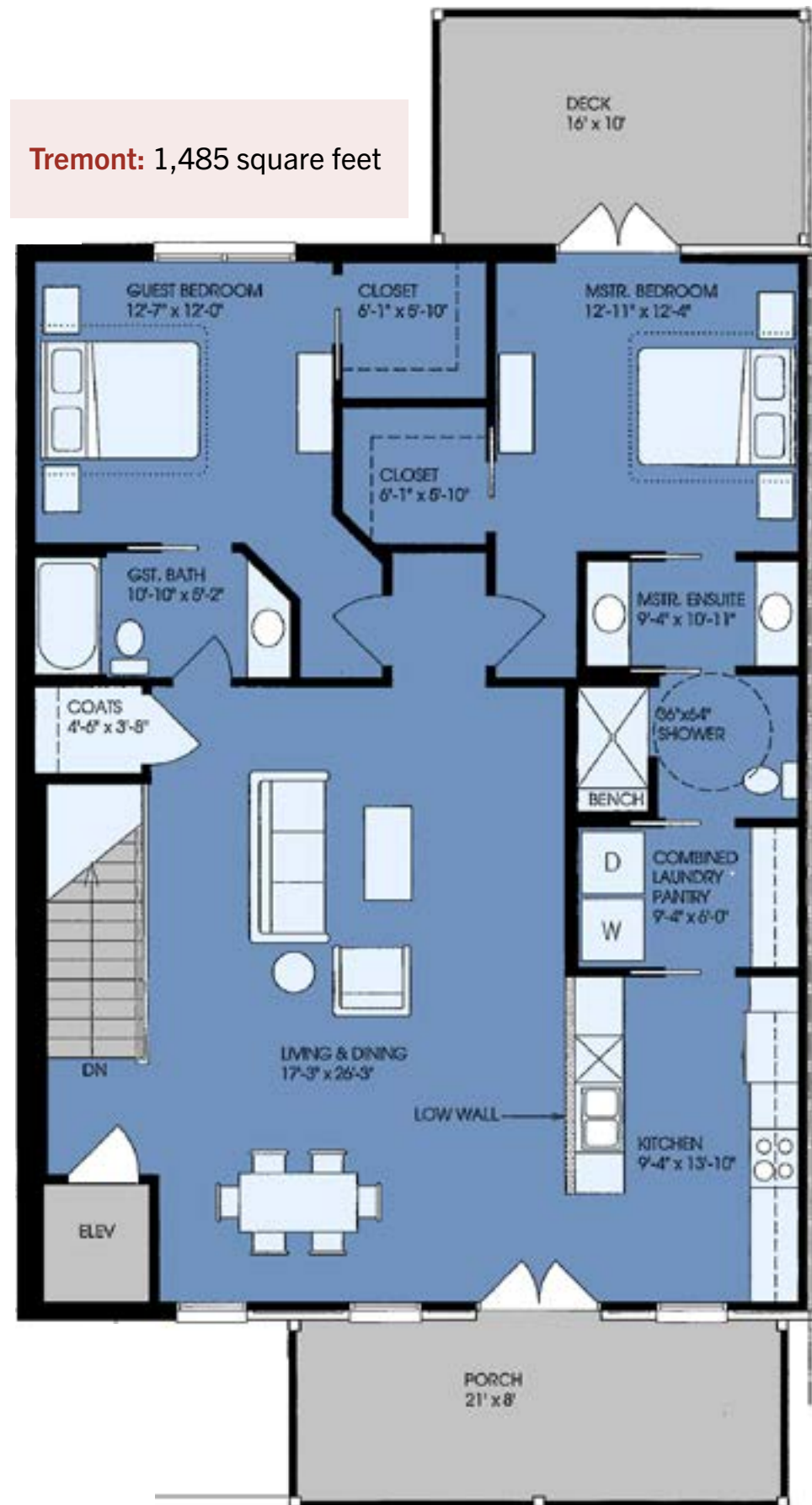
Redbud: 1,439 square feet



FLOOR PLANS



FLOOR PLANS

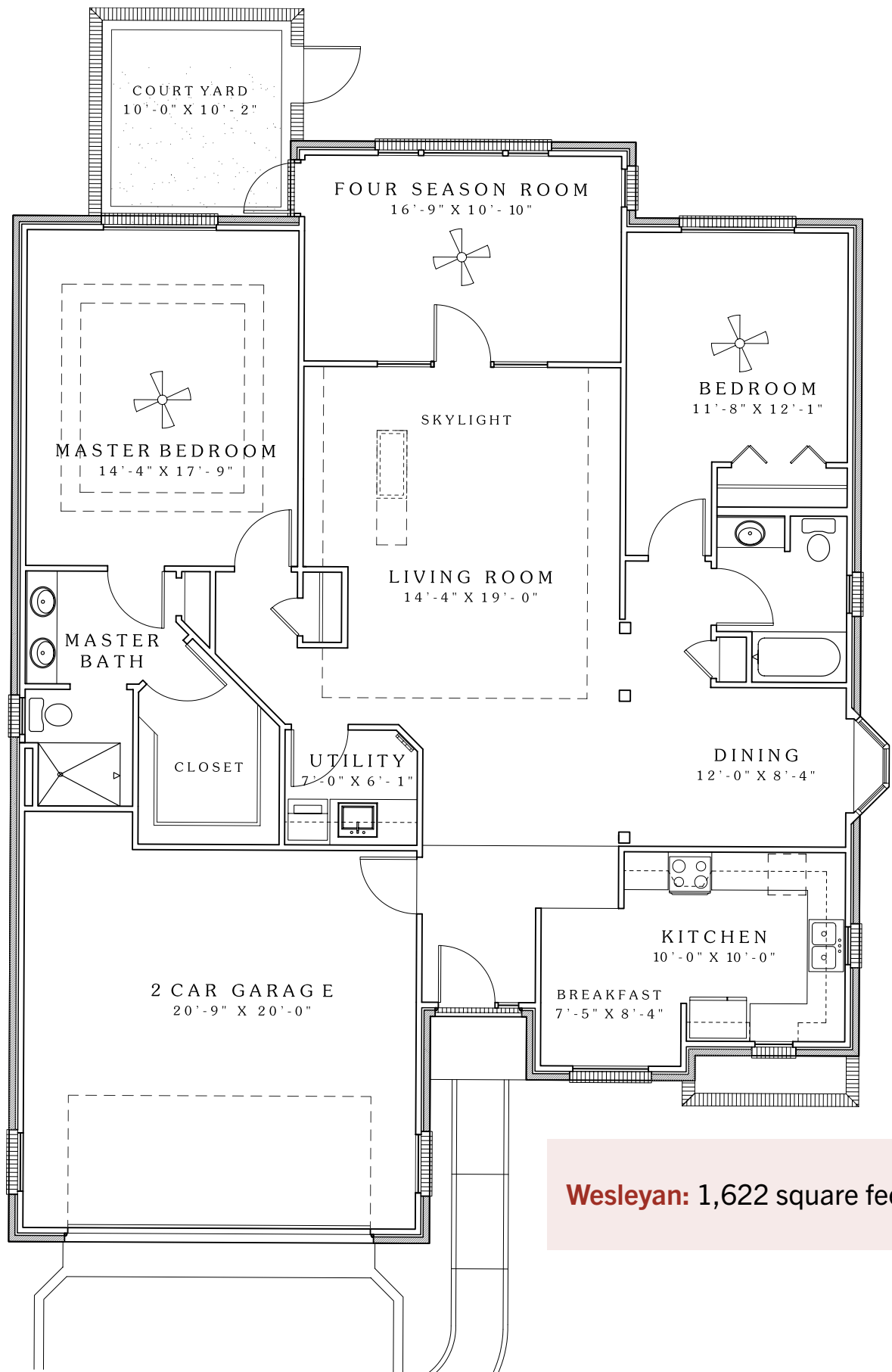


*St. Clair Cottage*

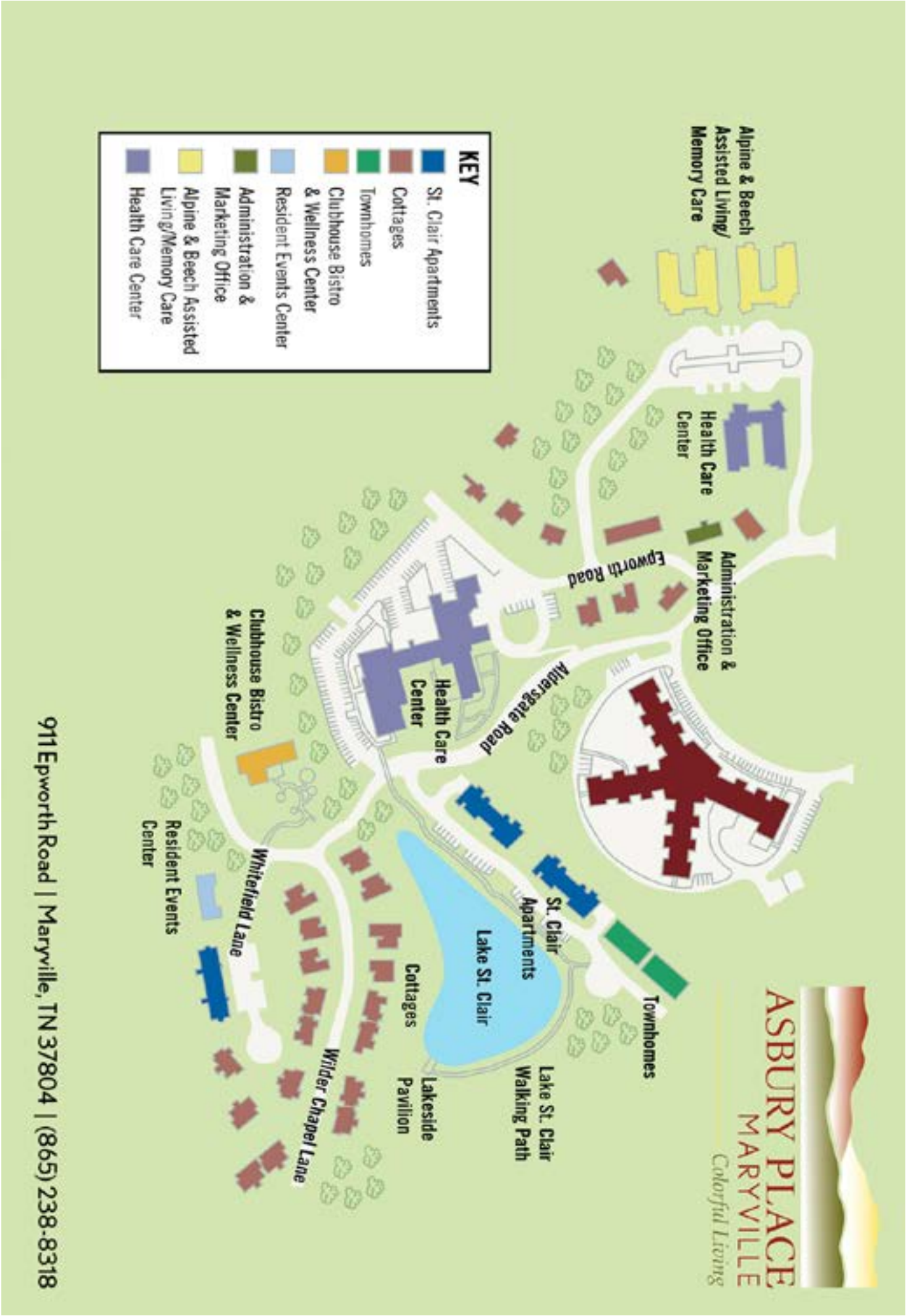
*Tremont Townhome*



# Wesleyan Cottage



**Wesleyan:** 1,622 square feet







**Asbury Place Maryville**

911 Epworth Road  
Maryville, TN 37804

MaryvilleSeniorLiving.com

Marketing: (865) 238-8318

Main Reception: (865) 984-1660



**ASBURY PLACE  
MARYVILLE**

*Colorful Living*

